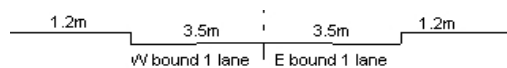
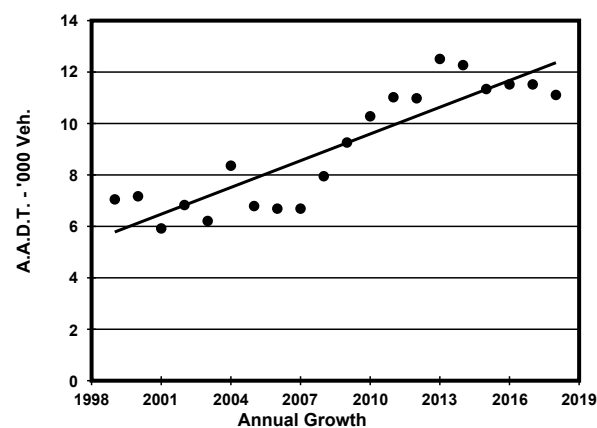
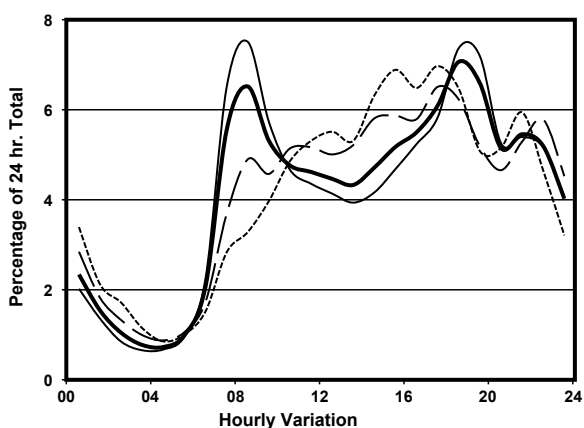
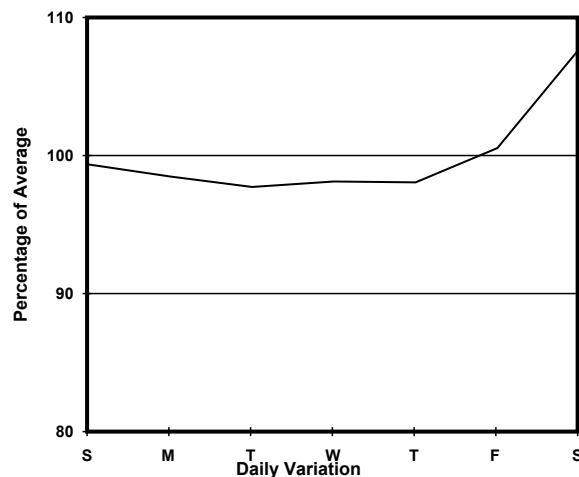
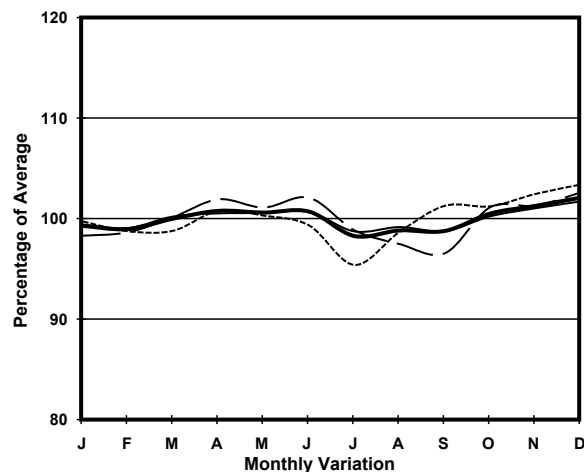


YEAR 2018
 COVERAGE (B) STATION 6209
 ROAD NETWORK MAJOR
 ROAD TYPE RURAL ROAD

LINK CASTLE PEAK RD - TSUEN WAN, TING KAU & SHAM
 TSENG (from TUEN MUN RD to SHAM TSENG)



1. TRAFFIC FLOW VARIATION AND GROWTH



2. TRAFFIC CHARACTERISTICS (BY DIRECTION)

Parameter	All - Day	Mon. - Fri.	Sat.	Sun.
EAST BOUND				
A.A.D.T.	5430	5400	5680	5320
R 12 / 24 - %	67.4	68.3	65.6	64.6
R 16 / 24 - %	85.1	85.9	83.2	83.2
AM Peak Hour	0800-0900	0800-0900	0800-0900	0900-1000
One-way flow at AM peak hour	470	540	360	230
T - % (AM)	-	12.7	-	-
PM Peak Hour	1800-1900	1800-1900	1700-1800	1700-1800
One-way flow at PM peak hour	290	280	360	370
T - % (PM)	-	7.7	-	-
Prop.of commercial vehicles - 16 hr.	-	11.4	-	-
WEST BOUND				
A.A.D.T.	5680	5550	6290	5720
R 12 / 24 - %	60.9	60	62.3	63.9
R 16 / 24 - %	87.8	88.4	86.3	86.8
AM Peak Hour	0800-0900	0800-0900	0900-1000	0900-1000
One-way flow at AM peak hour	260	280	230	210
T - % (AM)	-	17.6	-	-
PM Peak Hour	1800-1900	1800-1900	1800-1900	1600-1700
One-way flow at PM peak hour	490	530	430	410
T - % (PM)	-	2.4	-	-
Prop.of commercial vehicles - 16 hr.	-	6.9	-	-

3. OTHER INFORMATION AND COMMENT

4. Vehicle classification and occupancy - Monday to Friday

Time		Class of vehicle									
		Motor Cycle	Private Car	Taxi	Private LB	PLB	Goods veh.		Non Fr. Bus	Fr. Bus	
							Light	M & H		SD	DD
0700-0800	Pro	2.7	26.3	18.9	4.7	14.8	15.5	0.7	13.5	0.7	2.2
	Ocp	1.0	1.3	1.7	7.1	13.1	1.9	1.0	25.9	13.0	34.8
0800-0900 Peak hour	Pro	1.5	53.6	8.2	3.9	8.2	10.1	5.8	6.8	0.4	1.6
	Ocp	1.0	1.3	1.7	9.3	12.1	1.7	1.3	13.9	10.7	22.8
0900-1000	Pro	1.7	48.5	9.7	1.1	10.3	16.5	5.1	5.1	0.7	1.1
	Ocp	1.0	1.5	2.1	1.5	11.9	1.7	1.3	13.0	13.4	21.1
1000-1100	Pro	2.2	54.6	9.5	0.7	10.2	13.8	2.2	4.4	0.7	1.6
	Ocp	1.3	1.5	1.6	2.0	13.9	1.5	1.3	12.7	13.5	16.2
1100-1200	Pro	1.8	33.3	11.4	2.6	16.7	23.7	1.8	6.1	0.7	2.0
	Ocp	1.0	1.3	1.8	9.0	10.5	1.8	1.5	16.3	10.7	22.6
1200-1300	Pro	1.8	42.9	8.0	3.6	13.4	16.1	1.8	9.8	0.9	1.8
	Ocp	1.0	1.4	1.8	6.8	12.3	1.4	1.5	9.0	12.5	23.1
1300-1400	Pro	2.0	44.7	11.9	0.0	15.9	17.9	2.0	3.0	0.7	2.0
	Ocp	1.0	1.5	1.5	0.0	10.1	1.8	2.0	4.0	19.0	23.9
1400-1500	Pro	2.7	47.7	20.7	0.0	9.9	10.8	2.7	2.7	0.9	1.8
	Ocp	1.0	1.8	1.7	0.0	12.2	1.6	1.3	15.0	10.8	26.8
1500-1600	Pro	2.9	48.8	8.6	1.0	17.2	12.4	2.9	3.8	0.5	1.9
	Ocp	1.0	1.7	1.7	3.0	10.2	1.4	1.3	15.3	10.5	29.3
1600-1700	Pro	0.0	50.9	12.4	4.6	14.4	10.4	0.0	5.9	0.5	1.0
	Ocp	0.0	1.5	1.6	4.6	13.6	1.4	0.0	3.9	16.7	32.5
1700-1800	Pro	2.9	50.7	12.3	2.9	15.9	7.2	0.0	5.1	0.7	2.2
	Ocp	1.0	1.3	1.5	2.3	14.5	1.3	0.0	7.6	14.5	29.6
1800-1900	Pro	2.2	59.7	12.7	0.0	11.6	9.9	0.0	1.7	0.4	1.8
	Ocp	1.0	1.6	1.9	0.0	13.0	1.7	0.0	11.7	14.0	26.5
1900-2000	Pro	1.4	64.3	13.9	0.0	13.4	2.4	0.5	2.4	0.2	1.4
	Ocp	1.0	1.5	1.5	0.0	11.5	1.0	1.0	7.6	8.0	29.6
2000-2100	Pro	1.1	50.8	24.6	0.0	13.1	1.1	0.5	7.1	0.4	1.4
	Ocp	1.0	1.7	1.6	0.0	10.9	2.5	1.0	3.5	12.7	25.2
2100-2200	Pro	1.6	52.4	20.6	0.0	20.6	0.0	0.0	2.4	0.8	1.6
	Ocp	1.0	1.8	1.8	0.0	9.5	0.0	0.0	9.7	7.5	23.9
2200-2300	Pro	4.0	44.6	27.7	0.0	16.8	3.0	0.0	1.0	1.0	2.0
	Ocp	1.3	1.5	1.5	0.0	10.5	1.3	0.0	1.0	11.0	20.1
16 hours	Pro	1.9	49.5	14.3	1.6	13.5	10.2	1.7	5.1	0.6	1.7
	Ocp	1.0	1.5	1.7	6.1	11.8	1.6	1.4	12.5	12.5	25.8

Legend

Pro. Proportion of vehicles in % (Sum may not add up to 100% due to figure rounding)*

Ocp. Average occupancy of vehicles including both driver and passengers*

M&H Medium and Heavy

***** All traffic data are collected from combined bounds except for one way traffic